

Perinatal Care Certification Success Story

Loren Salter
Associate Director, Hospital Certification
The Joint Commission

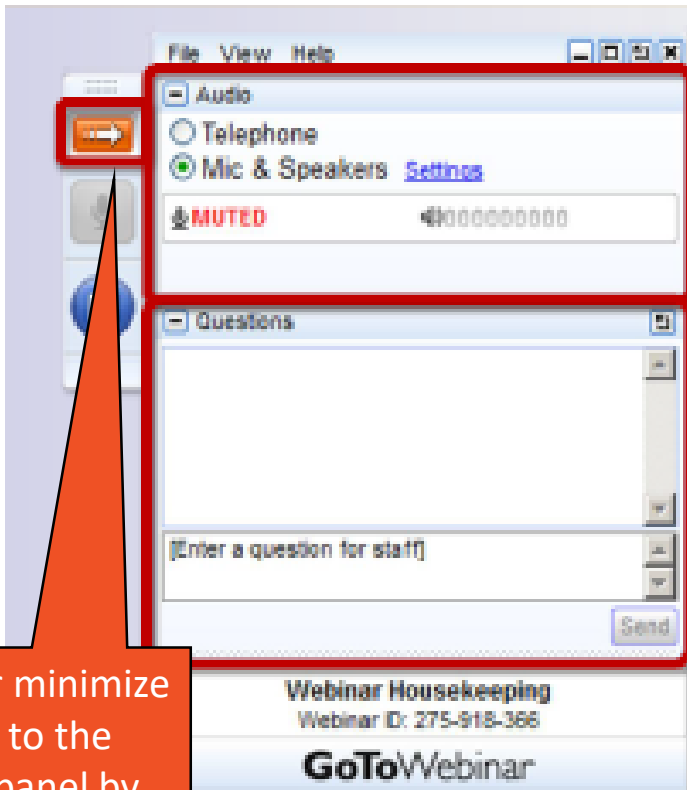
Holley H. O'Byrne BSN, RN, RNC-OB
Perinatal Care Certification Program Coordinator
Community Regional Medical Center

Sarah Putman MSN, MHA, RNC
Director, Women & Newborn Health
Community Regional Medical Center



March 13th, 2019

Housekeeping Notes



Expand or minimize access to the control panel by clicking on this arrow

Your Participation

Join audio:

- Choose "Mic & Speakers" to use VoIP
- Choose "Telephone" and dial using the information provided

Questions/Comments:

- Submit questions and comments via the Questions panel.

Note: Today's presentation is being recorded and will be posted on the Joint Commission website.

Objectives:

1. Learn the steps to achieve Perinatal Care Certification
2. Hear a success story from an organization who has achieved Perinatal Care certification
3. Discuss best practices regarding Perinatal Care certification and tips for success

More than a Badge of Honor

Perinatal Care Certification from The Joint Commission is more than a badge of honor. It provides an important framework to help you implement important changes, and elevate the quality of perinatal care in your community

Evidence-based practices and certification standards help your organization improve prenatal, intrapartum and postpartum patient care services. These standards help focus care delivery, and empower you to achieve integrated, coordinated and patient-centered care for clinically uncomplicated pregnancies and births.



The Gold Seal of Approval®

For more than 60 years, The Joint Commission has been synonymous with quality, safety and performance improvement. Our standards are the most rigorous in the industry; our surveyors and reviewers are among the most knowledgeable in their fields; and our accredited and certified organizations are among the top in the marketplace.

The Joint Commission Gold Seal of Approval® is widely recognized by peers, payors, insurers and the public, and helps you stand apart from competitors and build confidence in the community

Certification Framework

Organizations that achieve Perinatal Certification must provide:

- Integrated, coordinated and patient-centered prenatal through postpartum care
- Early identification of high-risk pregnancies and births
- Management of mothers' and/or newborns' risks, corresponding to the program's capabilities
- Direct care or stabilization and safe transfer of mothers and/or newborns with identified or unanticipated risks or complications
- Education and information about perinatal services to help mothers make informed decisions about care, treatment or services
- Ongoing quality improvement processes, in addition to The Joint Commission's perinatal care core measure set

Key Elements to Certification

Certification is your organization's commitment to continuous performance improvement, providing high quality patient care and reducing risks. Perinatal Care Certification is evaluated under the Disease-Specific Care Certification manual and has three main components:

- Standards
- Clinical Practice Guides
- Performance Measurement



This structure provides a framework for consistency of care to improve patient outcomes.

Perinatal Care Core Measures

- PC-01 Elective Delivery
- PC-02 Cesarean Birth
- PC-03 Antenatal Steroids
- PC-04 Health Care-Associated Bloodstream Infections in Newborns
- PC-05 Exclusive Breast Milk Feeding
- PC-06 Unexpected Complications in Term Newborns

[Specifications Manual for Joint Commission National Quality Measures](#)

Working Together Toward Excellence

Perinatal Certification from The Joint Commission offers your organization many opportunities and benefits, from gaining a competitive advantage to coming together across functions and departments.

Other benefits include:

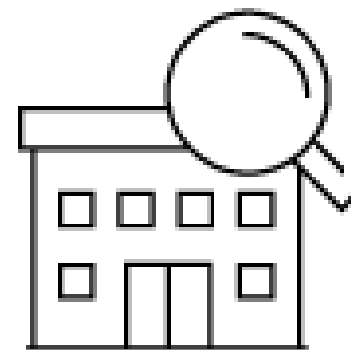
- Demonstrated commitment to a higher standard of clinical care
- Designated excellence in perinatal care
- Reduced risk of error through a consistent approach to care
- Improved patient outcomes
- Attract top level talent



Working Together Toward Excellence

Organizations that achieve Perinatal Care Certification may be able to showcase *reductions* in key measures, including:

- Infant mortality rates
- Maternal complications and mortality
- Unnecessary induction of labor
- Elective deliveries
- Complication of deliveries
- Prematurity rates
- Costs associated with lengthy hospital stays



Roadmap to Certification

MEET YOUR ASSOCIATE DIRECTOR

- certification@jointcommission.org

STEPS TO APPLICATION

- Review Standards in E-dition® and analyze gaps
- Identify Clinical Practice Guidelines
- Identify Performance Measures
- Complete Performance Improvement Plan

ONLINE APPLICATION

- Complete through Connect® Portal *No Data Uploaded at Application*

ON-SITE REVIEW (typically occurs 4-6 months after application is submitted)

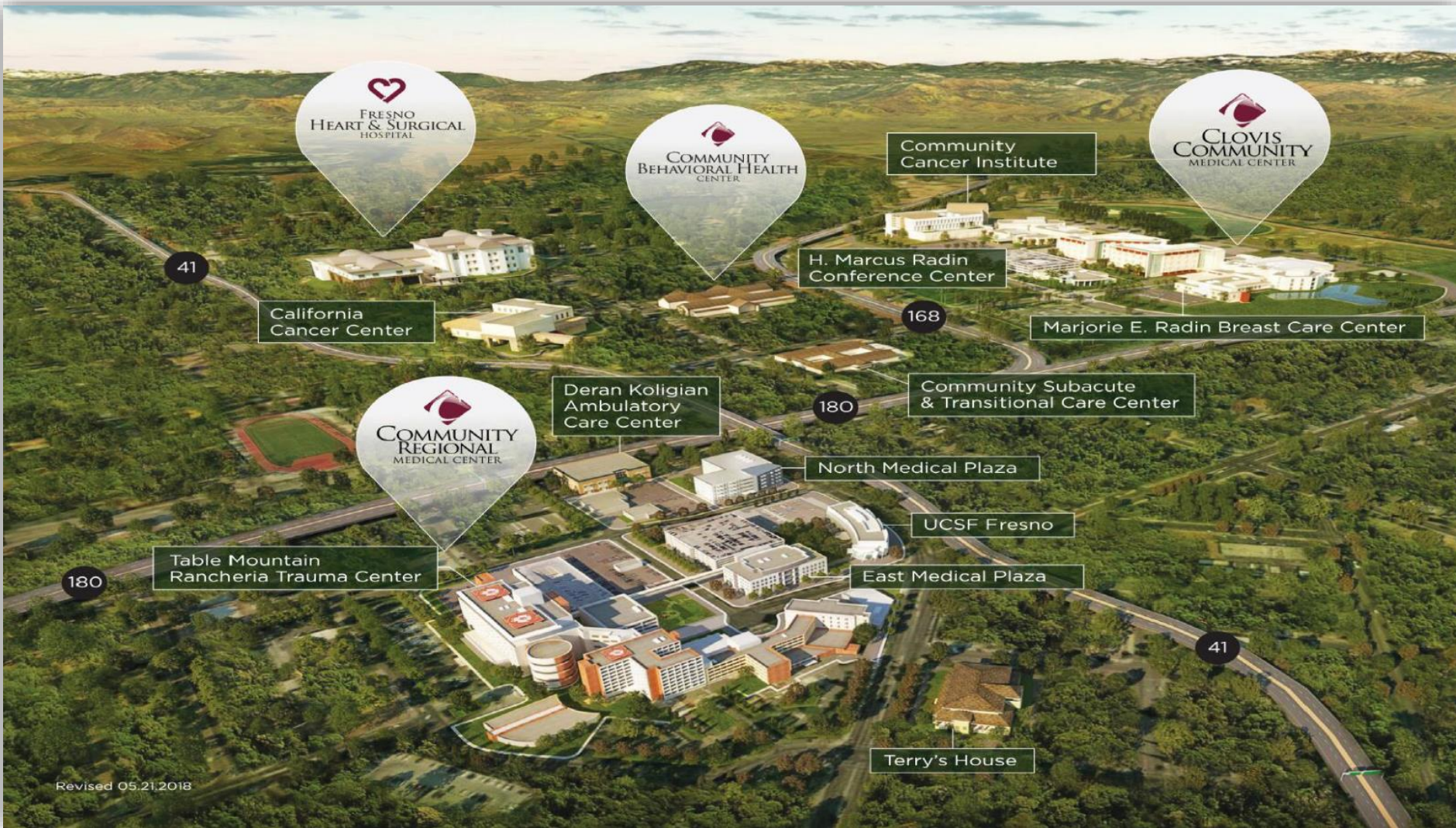
- 30 day advance notice
- Upload most recent 4 months of data for Performance Measures prior to visit
- One Reviewer, Two Days or Two Reviewers, Two Days

Perinatal Care Certification Success Story

Holley H. O'Byrne BSN, RN, RNC-OB
Perinatal Care Certification Program Coordinator
Community Regional Medical Center

Community Medical Centers Outline

- Our Birthing Centers
- Mission & Vision
- Why Get Certified?
- Perinatal Care
- Certification Team
Members & Committee
structure
- Preparation & Timeline
- On-Site Review
- Sister Facility Review
- Benefits of Certification



Revised 05.21.2018

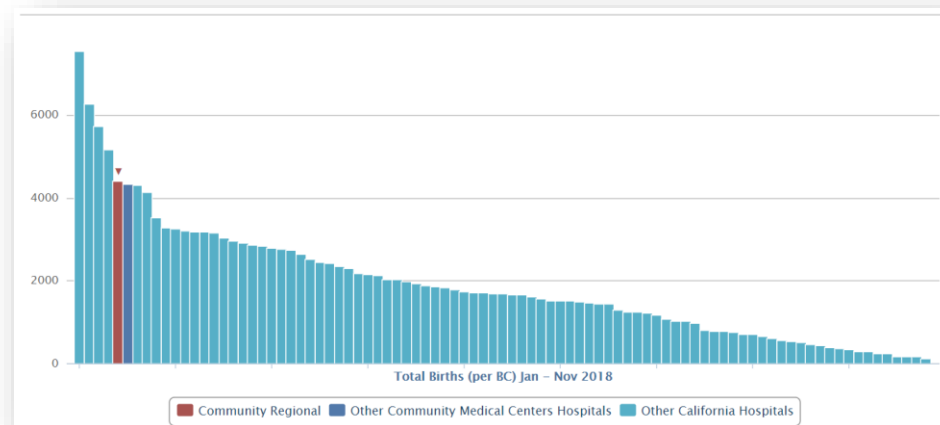
Community Medical Centers

- CRMC

- 2018: 4,713 Births (CMQCC)
- Level III NICU
- 2018: 900 Admissions to NICU
- Level I Trauma Center
- Perinatal Care Certification Review July 2018

- CCMC

- 2018: 4,706 Births (CMQCC)
- Level II NICU
- 2018: 221 Admissions to NICU
- Perinatal Care Certification Review February 2019



Why Pursue Certification?

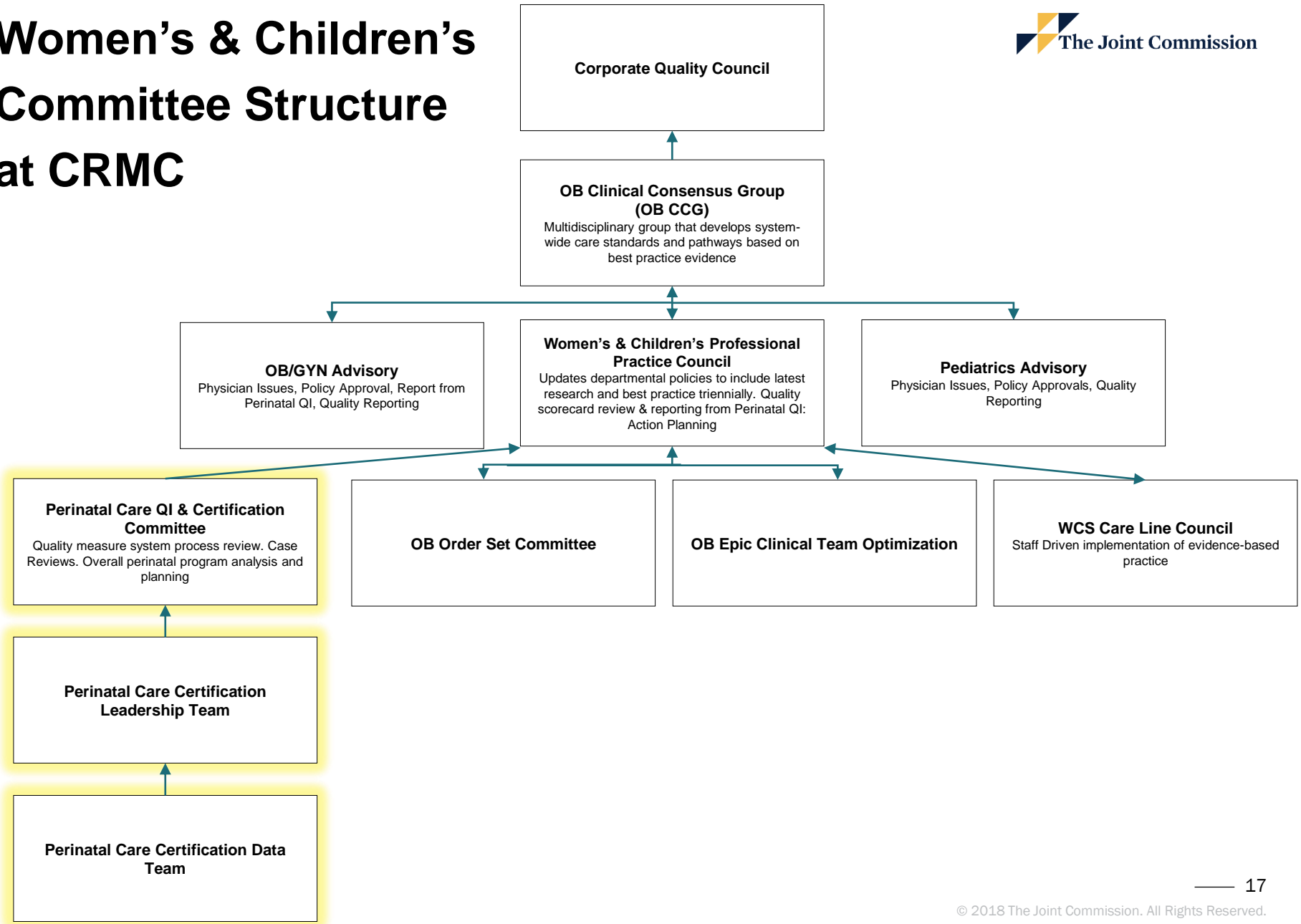
- Improve the quality of care provided to mothers and newborns in the region throughout the perinatal continuum
- Display our abilities & achievements to the community

Perinatal Care Certification Team

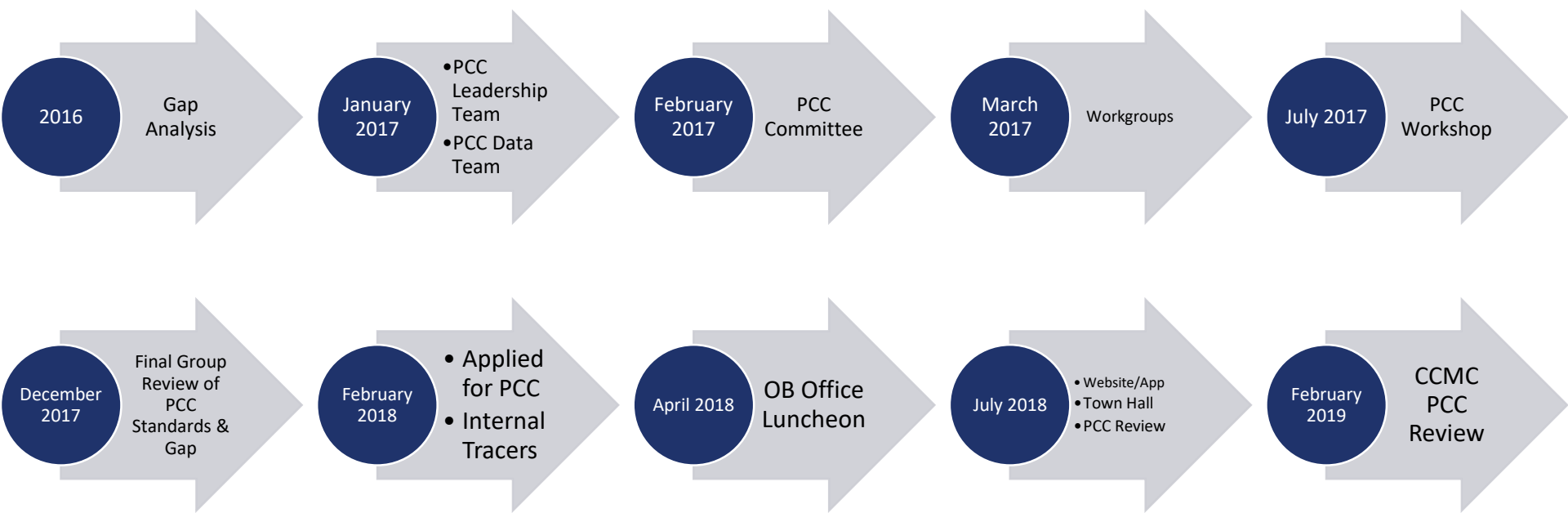
- Director of Women & Children's Services
- Director of Pediatric Services
- Medical Director of Maternal Fetal Medicine
- Department Managers
- Perinatal CNS & NICU CNS
- Clinical Educators
- Quality & Regulatory Department
- Program Coordinator



Women's & Children's Committee Structure at CRMC



Preparation - Leadership



Staff Buy-In

- Appeal to the WHY
- Certification vs Accreditation
- Consistent message & exposure



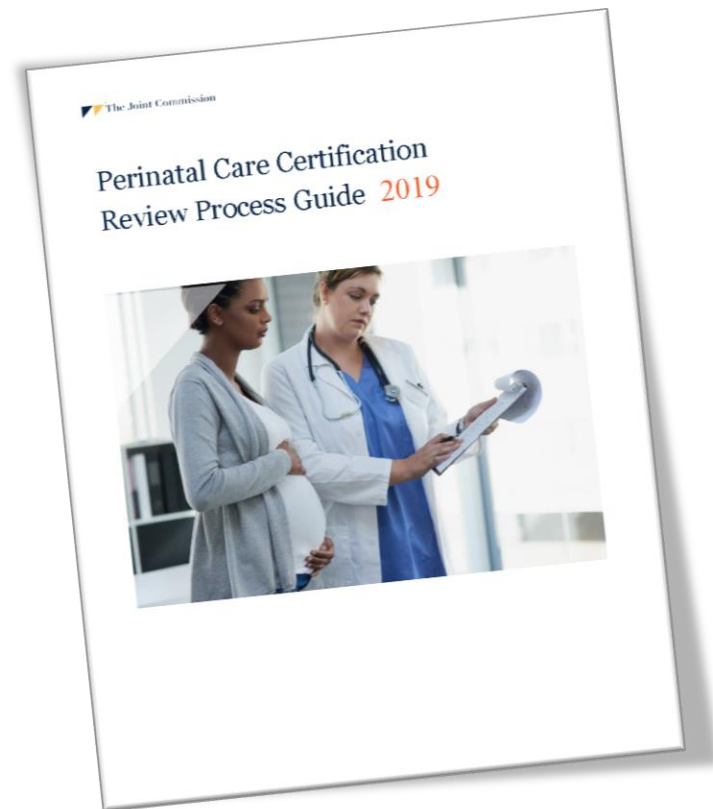
Preparation - Staff

- PCC swag
- Emails
- Skills Fair
- Staff Meetings
- Survival Guide
- Rounding Team
- Pocket Guide
- Shift Change Announcements
- Breakroom Posters
- Certifications, Education,
& Competencies up-to-date



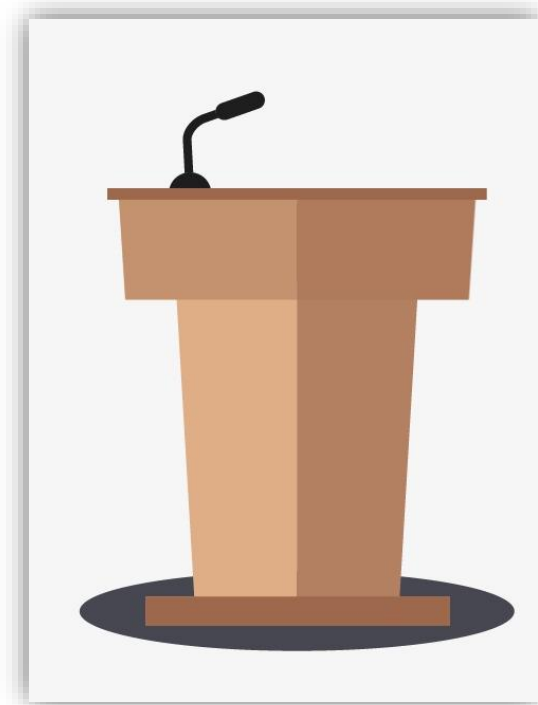
On-Site Review

- Information on hand for Reviewer:
 - “Organization Review Preparation”
(Page 6 of 2019 RPG)



Opening Conference

- Introductions
- PowerPoint
- Questions & Discussion
- Binder



Data System Tracer & Performance Improvement Initiative



Clinical Practice Guidelines

- American College of Obstetricians and Gynecologists (ACOG)
- Association of Women’s Health, Obstetric, and Neonatal Nurses (AWHONN)
- The American Academy of Pediatrics (AAP)
- California Maternal Quality Care Collaborative (CMQCC)
- California Perinatal Quality Care Collaborative (CPQCC)
- National Association of Neonatal Nurses (NANN)

Clovis Community Medical Center

- Review February 2019
- Sister facility
- Mandatory staff meeting



Review Experience

- Command Center
- Units traced
- Collaborative & Educational



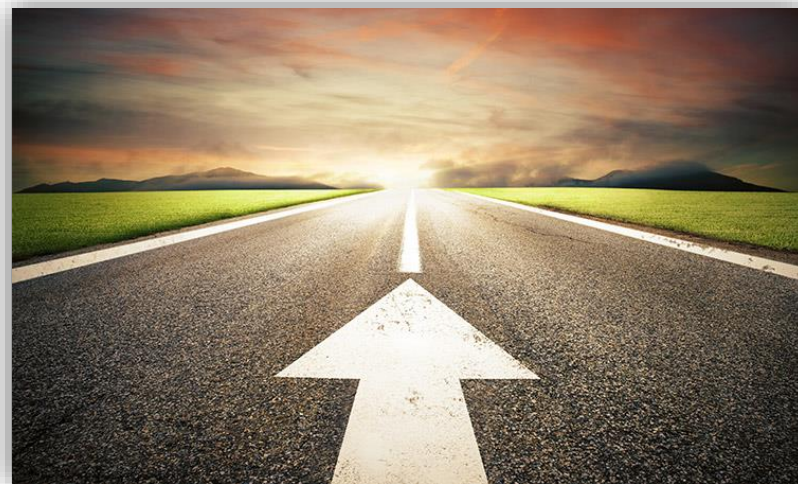
Benefits of Achieving Certification

- Program improvement
- Educational
- Validation
- Teamwork
- Community
- Staff pride



Moving Forward

- Recommendations and/or findings
- Continued collaboration between Community Regional Medical Center and Clovis Community Medical Center for any system related improvements
- PCC Standards
- Data-driven performance improvement initiatives
- 2020 & 2021 Reviews



Questions?

The Joint Commission Disclaimer

- *These slides are current as of 03/13/2019. The Joint Commission reserves the right to change the content of the information, as appropriate.*
- *These slides are only meant to be cue points, which were expounded upon verbally by the original presenter and are not meant to be comprehensive statements of standards interpretation or represent all the content of the presentation. Thus, care should be exercised in interpreting Joint Commission requirements based solely on the content of these slides.*
- *These slides are copyrighted and may not be further used, shared or distributed without permission of the original presenter or The Joint Commission.*