

Recognizing Excellence in the Laboratory

Quality Matters For The Patient Experience

The quality of laboratory services is critical to the overall patient experience, as test results inform the majority of clinical decisions. Clinical laboratory tests provide valuable information used to diagnose, treat, and monitor patients. Laboratory medicine and pathology services also enable life-saving early disease detection, and personalized medicine.

<p>260,000</p> <p>CLIA-certified laboratories across the country represent the cornerstone of diagnostic medicine today¹</p>	<p>14 Billion</p> <p>laboratory tests are ordered annually— safety, quality, and cost effectiveness in laboratory testing are required for effective diagnosis and treatment of disease¹</p>	<p>More than 7 Billion</p> <p>clinical laboratory tests are performed in the United States each year³</p>	<p>70%</p> <p>of today's medical decisions depend on laboratory test results and pathology reports, showing the important role of clinical laboratories in today's healthcare system¹</p>
--	--	---	---

The Medical Laboratory Workforce

The COVID-19 pandemic has exacerbated challenges medical laboratories face in recruiting and retaining qualified laboratory personnel. Stakeholders at all levels must work to create a resilient clinical laboratory professional workforce to prevent future workforce shortages.

Results from The American Society for Clinical Pathology 2020 Vacancy Survey²



Compared to data from 2018, a higher rate of respondents indicated **leaving the field altogether** (+6.0% change)

The main laboratory workforce concerns for the year included increased effort in heightening the profile of the laboratory profession in the medical field, and filling vacancies.

Laboratory leaders

Laboratory leaders are responsible for ensuring their teams provide high quality-results, while maintaining a safe and effective environment.

The Leading Laboratories designation was created to recognize these achievements by elevating and increasing visibility of the collaborative work of the medical laboratory team among clinical colleagues, hospital leadership, and most importantly, patients.

The gold standard for Laboratory excellence

The Leading Laboratories designation for Joint Commission-accredited laboratories was developed in collaboration with the American Society for Clinical Pathology (ASCP). The Leading Laboratory Recognition Program focuses on strategic partnerships within the laboratory and across health care settings to optimize patient-centric quality outcomes, professional development, trusted leadership, and laboratory visibility.



What defines a Leading Laboratory?

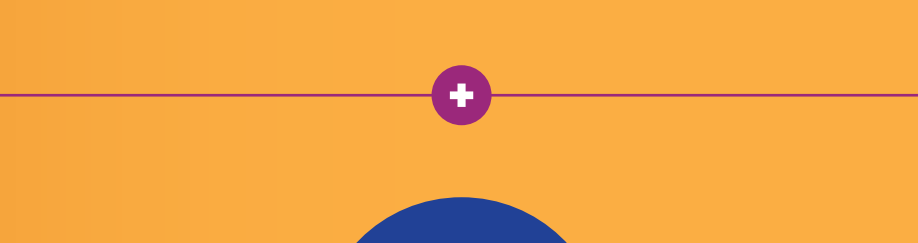
-  A key contributor to the overall patient experience, and generates quality outcomes which support a positive, patient-centric mission.
-  Advocates a continuum of learning and activities that aid in improving laboratory professionals' knowledge, competence, skill, and effectiveness.
-  Laboratory leaders aligned with their organization and community to foster collaborative relationships and better embody value-based healthcare.
-  Increased visibility of the laboratory and the broader profession through active promotion and recognition of its vital role in a patient's healthcare journey.

Joint Commission laboratory accreditation provides the foundation for a Leading Laboratory

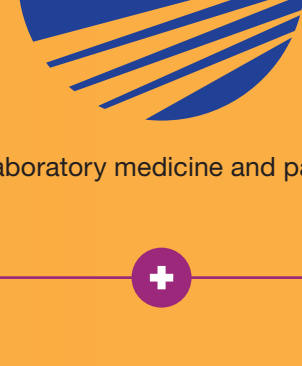
The Joint Commission is unique in its ability to create synergy and accreditation across entire clinical organizations by accrediting both laboratories and hospitals.

Joint Commission laboratory accreditation provides organizations the foundation for their journey to achieve the Leading Laboratories recognition. Through accreditation, organizations identify risks and process improvement opportunities that are foundational to the very first component of leading laboratories—quality outcomes.

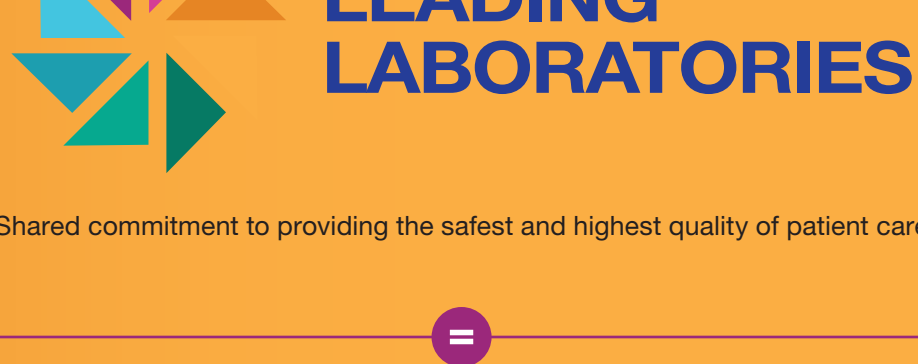
All Joint Commission Accredited Laboratories are eligible for the Leading Laboratories program and can pursue the designation for the outstanding work that they do that goes above and beyond.



The nation's oldest and largest standards-setting and accrediting body in health care, accredits and certifies over 22,000 organizations and programs.



Over 100 years of influence in laboratory medicine and pathology with 100,000+ members



Shared commitment to providing the safest and highest quality of patient care

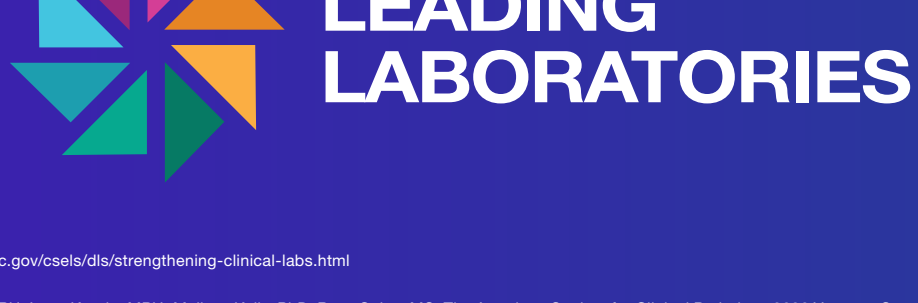
A powerful collaboration committed to supporting a positive, patient-centric mission, building stronger and more resilient teams, elevating the role of medical laboratories within the clinical care team and healthcare systems and increasing visibility to the vital role laboratories play in a patient's healthcare journey

Why become a Leading Laboratory?

The designation recognizes laboratories that demonstrate an exemplary focus to positively impact quality patient outcomes. This focus also yields benefits for the laboratory, as the program is designed to:

-  Build stronger, more resilient laboratory teams through facilitating and highlighting the development of individuals and team members.
-  Elevate the role of medical laboratories within the larger clinical care team and their organizations or health care systems.
-  Expand awareness of the vital role of medical laboratories among patients and the public.
-  Garner respect within the pathology laboratory medicine community.

For more information visit: leadinglaboratories.org



1. <https://www.cdc.gov/csels/dls/strengthening-clinical-labs.html>
 2. Edna Garcia, MPH, Iman Kundu, MPH, Melissa Kelly, PhD, Ryan Soles, MS, The American Society for Clinical Pathology 2020 Vacancy Survey of Medical Laboratories in the United States, American Journal of Clinical Pathology, 2021; aqab197. <https://doi.org/10.1093/ajcp/aqab197>
 3. <https://www.acla.com/value-of-lab-testing/>